



Rural Development and Cooperatives Division
Ministry of LGRD & Cooperatives



EMPOWERING CLIMATE VULNERABLE COMMUNITIES

BANGLADESH, RANKING
7TH
IN CLIMATE RISK
GLOBALLY

THE CHAR AREAS ARE
HOME TO APPROXIMATELY
6.5 MILLION
INDIVIDUALS

CONTRIBUTING
A STAGGERING
\$3.5 BILLION
ANNUALLY TO
BANGLADESH'S GDP

63% OF CHAR
FAMILIES EXPERIENCE
RELOCATION DUE TO
ENVIRONMENTAL
CHANGES AND SHIFTING
CLIMATE PATTERNS



WHERE M4C HAS CONTRIBUTED

SUSTAINABLE DEVELOPMENT GOALS



NATIONAL INITIATIVES RELEVANT TO M4C'S GOAL AND APPROACHES

- 8th five-year plan (2020-2025)
- National Adaptation Plan of Bangladesh (2023-2050)
- Perspective Plan (2021-2041)
- National Plan for Disaster Management (2021-2025)
- National Agriculture Policy 2018

HOW M4C HAS CONTRIBUTED TO CLIMATE ACTION IN THE CHARS



M4C'S STRATEGIES OVER THE PERIOD

2012- 2016

2016- 2020

2020-2023

2024

Adopting new practices and technologies.

Using resistant seed varieties.

Implementing environmentally friendly techniques.

New adaptive measures for crops and livestock, incorporating advanced practices, diversification, and crop rotation.

Following earlier efforts, broadened adaptive and mitigation strategies beyond crops and livestock.

Advanced practices and technologies, further diversification, greening initiatives, renewable energy,

Looking ahead, scaling up existing pilots and introduce more climate actions to further strengthen our adaptive and mitigation strategies.

WHAT M4C HAS ACHIEVED



20+ national actors (private and public) engaged towards DRR initiatives and climate action



1,200+ hectares of char land area currently being farmed with any of the advanced sustainable soil health management techniques



150,000+ households have gained access to disaster-resistant or climate-adaptive products and services



300+ service providers have adopted environmentally friendly or climate-smart practices



35,000+ smallholder farmers have adopted greener practices, and environmentally sustainable production methods

A GLIMPSE OF INITIATIVES

CAPACITY DEVELOPMENT OF
MICRO-ENTREPRENEURS

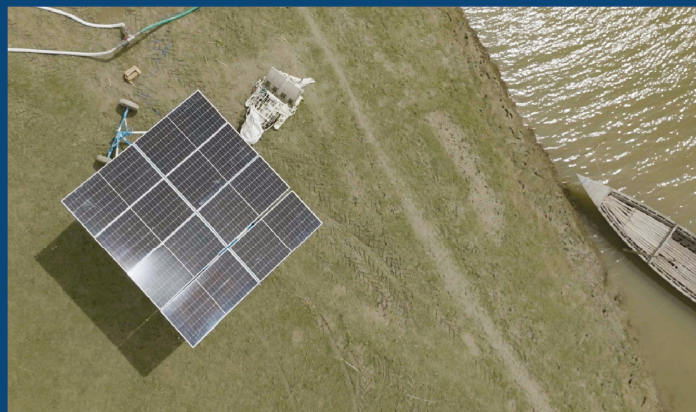
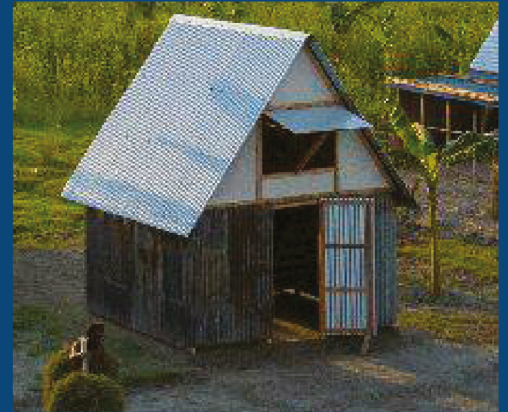
ESTABLISHMENT OF
PORTABLE STORAGE



CLIMATE ADAPTIVE
VEGETABLE
SEEDLING
PRODUCTION



DISASTER AND DISEASE RESILIENT PRODUCTS AVAILABILITY



RENEWABLE
ENERGY

ACCESS TO
HEALTH CARE SERVICES

RESILIENT
INFRASTRUCTURE

AGROFORESTRY
ACCESS TO
FINANCE

LEGUMINOUS
CROP
PROMOTION

TRICO
COMPOSTING



Making Markets Work For The Chars (M4C) is a market development project mandated by the Embassy of Switzerland and Ministry of Local Government, Rural Development and Cooperatives, and implemented by Swisscontact Bangladesh, and Rural Development Academy (RDA), Bogura.



**Scan to learn more
About M4C**