



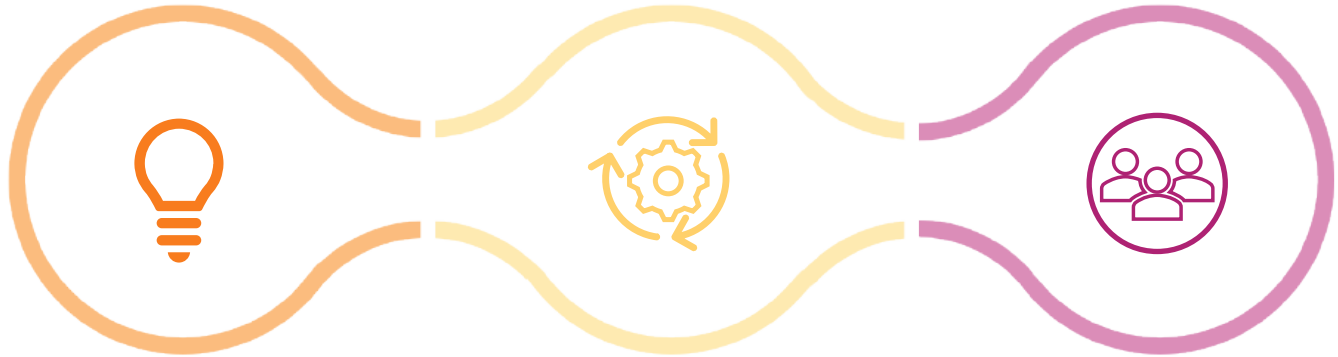
SOUTHEAST ASIA
REGION

2023

2024

CAMBODIA
INDONESIA
LAOS
VIETNAM

CONTENTS



- ➔ About us
- ➔ Mission
- ➔ Southeast Asia
- ➔ Areas of work

- ➔ Objectives
- ➔ Core competencies
- ➔ Projects

- ➔ Impact
- ➔ Team
- ➔ Funders and partners

ABOUT US

Swisscontact is an independent non-profit development organisation established in 1959 by representatives of the Swiss private sector and civil society. Our work focuses on private sector-led sustainable economic development and improved quality of life for all in developing and emerging countries. A key focus is to strengthen the skills of individuals and foster the competitiveness of businesses.

We are a longstanding development partner in the region with activities in Indonesia starting in 1974. Our expansion to the Mekong started with Laos in 2013, Cambodia and Vietnam in 2016 and regional projects from 2018 onwards. Our 200 strong team implements 20 projects in our focus countries and we provide technical advice to key programmes in SE Asia.





MISSION

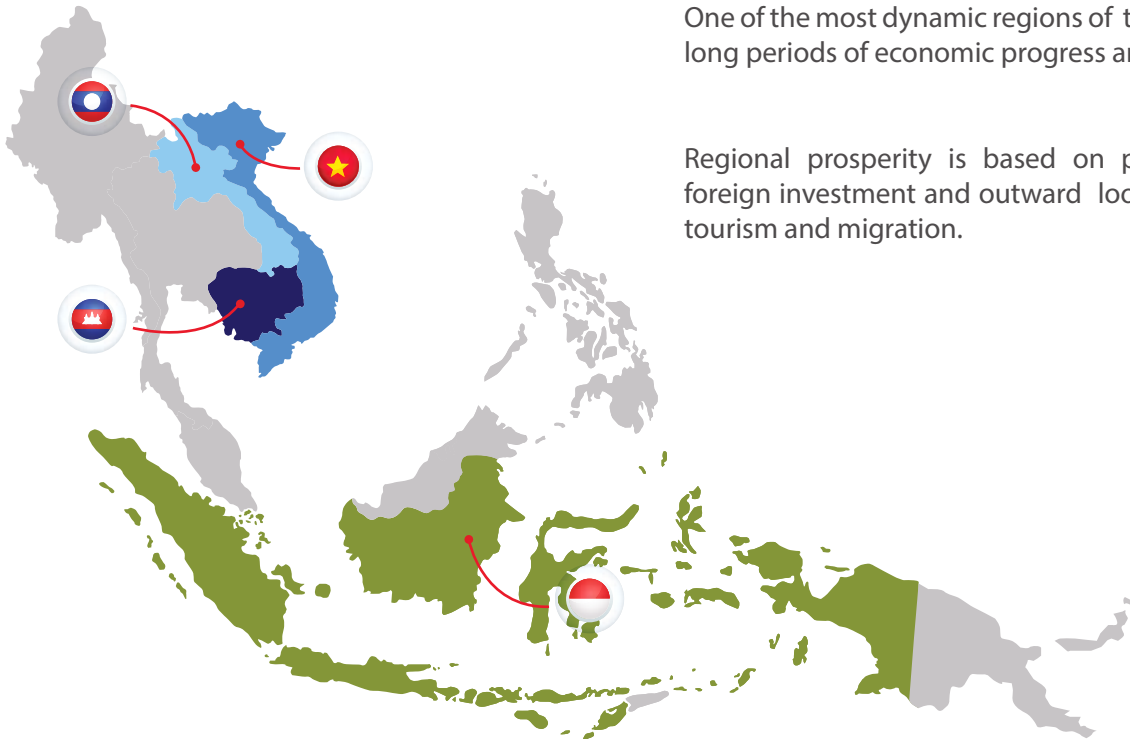
We unleash the potential of private initiative to foster sustainable development and shared prosperity in developing and emerging economies.

At Swisscontact, our mission statement embodies our purpose and identity. We firmly believe that private initiative drives innovation, change and economic progress. As an organisation, we continually create innovative and scalable solutions to address critical development challenges, all while aligning with the Sustainable Development Goals (SDGs). Quality is at the core of our work. We are committed to investing in quality enhancements to maximise our impact, outreach and sustainability. Our project partners share our values and long-term vision, emphasising on systems transformation.

SOUTHEAST ASIA

One of the most dynamic regions of the world. Experiencing long periods of economic progress and poverty reduction.

Regional prosperity is based on private sector growth, foreign investment and outward looking policies on trade, tourism and migration.



AREAS OF WORK



ENTERPRISE

- Sustainable landscapes.
- Regenerative agriculture and sustainable supply chains.
- Transition finance to promote change from traditional agriculture.
- Sustainable consumption and production processes.
- Increase of competitiveness of enterprises in different industries.



PEOPLE

- Promoting dual VET in industry specific polytechnics.
- Scaling up informal training
- Strengthen the competencies of people for entering the job market.



ECONOMY

- Enhancing entrepreneurial eco - systems.
- Trade promotion with Switzerland and Europe.
- Enhancing the skills and enterprise policy and promotional framework.

OBJECTIVES

Swisscontact contributes to the Sustainable Development Goals (SDGs) through a variety of pathways focusing on private sector development in partnership with host governments and stakeholders. Private Sector Engagement (PSE) and Public Private Development Partnerships (PPDPs) are key elements of our approach. We support the private sector in going beyond Corporate Social Responsibility (CSR) and philanthropy to promote “shared value” initiatives and altering traditional ways of doing business. Through our work, small, medium and large private companies as well as commercial farmers and agri-businesses are bringing new technologies and innovation to markets and creating additional jobs and opportunities. These themes are central to the case for covid recovery in the short- term and climate change beyond.



CORE COMPETENCIES



VOCATIONAL EDUCATION
AND TRAINING



LABOUR MARKET
INSERTION



CONTINUING VOCATIONAL
EDUCATION AND TRAINING



ENTREPRENEURIAL
ECOSYSTEMS



GREEN CITIES



SUSTAINABLE
AGRICULTURE



SUSTAINABLE TOURISM
DEVELOPMENT



TRADE



PROJECTS

REGIONAL PROJECTS

- 1 Swiss Entrepreneurship Program (**Swiss EP**) - Vietnam
- 2 Swiss Import Promotion Programme (**SIPPO**) - Vietnam
- 3 Market Development Facility (**MDF**) - Sri Lanka and the Pacific
- 4 Technical Assistance to **PRISMA** - Indonesia

CAMBODIA

- 1 Improving Small Package E-Trade for SMEs (**SeT4SME**)
- 2 Innovation for Sustainable Agriculture (**ISA**)
- 3 Skills Development Programme (**SDP**)
- 4 Enhancing Entrepreneurial Ecosystem and Investments (**3EI**)
- 5 Digital Literacy Initiative Cambodia (**DLI**)
- 6 Digital Learning Materials for TVET (**DLM4TVET**)
- 7 Senior Expert Contact (**SEC**)

INDONESIA

- 1 Swiss Skills for Competitiveness (SS4C) programme consists of Skills for Competitiveness (**S4C**) and Sustainable Tourism Education Development projects (**STED**)
- 2 Swiss Import Promotion Programme (**SIPPO**)
- 3 Sustainable Landscape Program Indonesia (**LASR**)

LAOS

- 1 Vocational Training and Employment Support Services in Laos (**VTESS**)
- 2 Waste to Value (**W2V**)
- 3 Digital Literacy Initiative Laos (**DLI**)
- 4 Sustainable Consumption and Production in Lao PDR (**SCP Lao**)



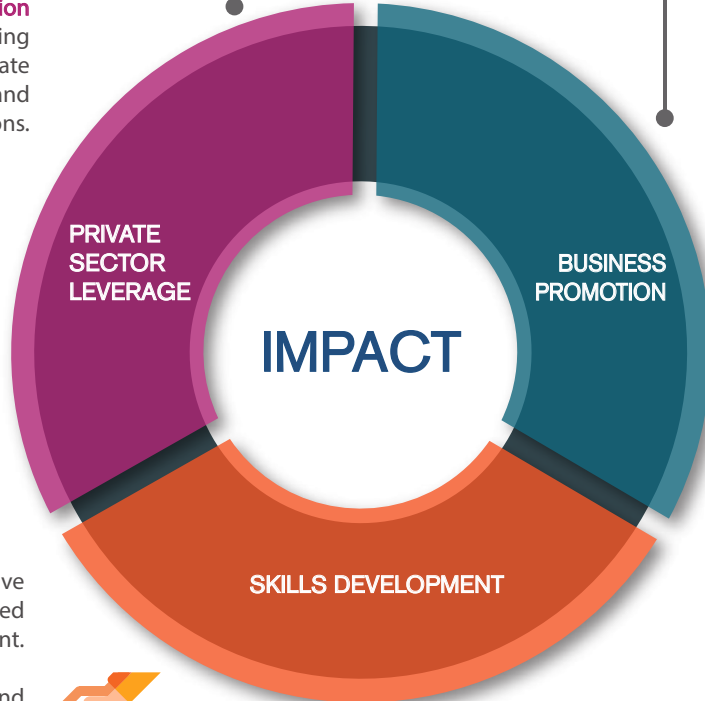
More than **CHF 7,6 million** leveraged by implementing partners from the private sector through cash and in-kind contributions.



995,074 (32% female-led) smallholder farms and non-agri **MSMEs** accessed improved products and services.

537,699 (34% female-led) smallholder farms and non-agri **MSMEs** benefited through increased incomes.

71,196,651 CHF Additional income generated and 359 jobs created by smallholder farms and non-agri **MSMEs**.



IMPACT



7,479 people (44% female) have accessed and completed programmes in skills development.

3,306 people (47% female) found employment or started self-employment and generated an additional annual income of **1,479,400 CHF**.

REGIONAL MANAGEMENT



Ely S. Setheono
BA Coordinator - SEA



Michael Fink
Country Director Laos



Prashant Rana
Director South East Asia



Rajiv Pradhan
Country Director Cambodia



Daniel Weibel
Country Director Indonesia



Dyan Barutzki
Communications Coordinator

SENIOR MANAGEMENT



Andi Aulia
Country Office - Indonesia



Aris Darujo
SIPPO - Indonesia



Chansamai Xong
Country Office - Laos



Christian Volker Ide
SDP - Cambodia



Christina Rini
LASR - Indonesia



Erica Chiajui Wu
DLI - Cambodia



Khamla Souksawat
Country Office - Laos



Kimchean Prum
Country Office - Cambodia



Latdaphone Vongkhamheng
DLI - Laos



Manfred Egger
VTESS - Laos



Mengcheang Nhep
SDP - Cambodia



Puji Maharani
Country Office - Indonesia



Phetsavart Phangphonghakdy
VTESS - Laos



Rob Hitchins
MDF - Regional



Setha Rath
ISA - Cambodia



SokHuy Lay
3Ei - Cambodia



Sorphorn Souk
Country Office - Cambodia



Soudsaichay Baudrez
VTESS - Laos



Vithakone Naophachanh
Country Office - Laos

PARTNERSHIPS

Swisscontact builds and strengthens solid partnerships which are essential to achieve the best possible and sustainable outcomes for our beneficiaries.

Partnerships with the private sector and host governments are at the core of our inclusive systems development approach in our projects. We work with governments on regenerative agriculture, trade and export promotion, skills standards, promoting dual vocational training polytechnics and sustainable tourism.

In doing so, we amplify our results through working with the private sector in adapting new business models in their value and supply chains to include disadvantaged sections of society, raising skills standards in key sectors such as hospitality, agriculture mechanization, entrepreneurship promotion and impact investment.



FUNDERS



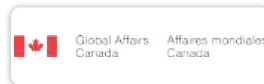
Swiss Confederation

Federal Department of Economic Affairs,
Education and Research EAER
State Secretariat for Economic Affairs SECO



Schweizerische Eidgenossenschaft
Confédération suisse
Confederazione Svizzera
Confederaziun svizra

Swiss Agency for Development
and Cooperation SDC



PARTNERS



CONTACTS



CAMBODIA

Phnom Penh THANS CORP Building #46, 7 Flr.,
Mao Tse Toung Blvd (245), Sangkat Boeng
Trabek, Khan Chamkarmorn Phnom Penh,
Cambodia Phone: +855 23 901 156/7

www.swisscontact.org/cambodia



INDONESIA

AIA Central, 41st Floor, Jl. Jend. Sudirman
Kav. 48A, South Jakarta, 12930, Indonesia
Phone: +62 21 2527600

www.swisscontact.org/indonesia



LAOS

3rd floor, 108 Hill Building, 49 Dongpaina, Ban
Saphanthong Neua, Sisattanak District,
Vientiane Capital, Laos
Tel: +856 21 454148 Phone: +856 21 454148

www.swisscontact.org/laos



We create opportunities